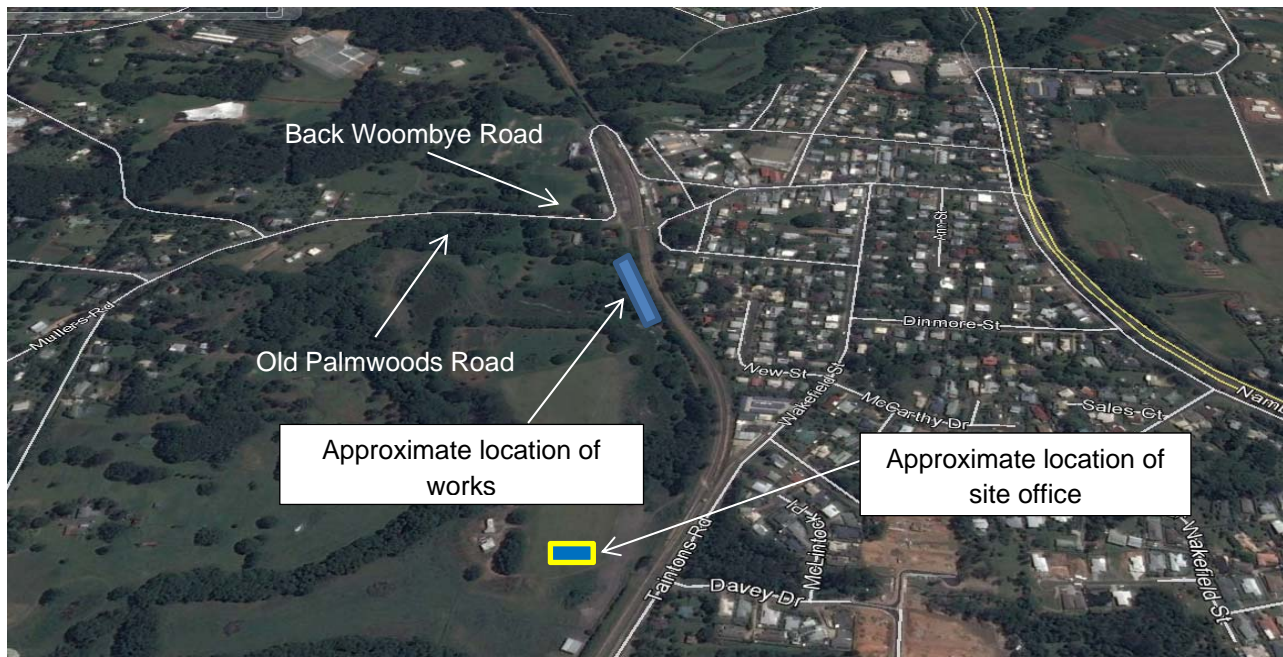


SEQ Rail Stabling Program - Woombye construction update

As part of the SEQ Rail Stabling Program, Queensland Rail and CPB Contractors (formerly known as Leighton Contractors) will be undertaking vital construction activities along the rail corridor during the scheduled track closure of the North Coast line.



This work will be undertaken from **4am Saturday 6 February to 10pm on Sunday 7 February 2016.**

Works will include:

- Vegetation removal
- Delivery trucks and workers' vehicles entering the site via the corner of Old Palmwoods Road and Back Woombye Road
- Use of machinery such as excavators, elevated work platform, chainsaw, front-end loaders, mulching machine and generators
- Mobile lighting towers to light the work areas
- Delivery and unloading of materials.



SEQ Rail Stabling Program - Woombye construction update

Additionally, throughout February 2016, various construction activities will continue to be undertaken to build the stabling facility at Woombye.

Activities will include:

- Removal of topsoil
- Earthworks to grade and level the construction area
- Transporting material using haulage trucks.

You will notice some changes around your local area and onsite during these works including:

- Increased truck and vehicle movements along Old Palmwoods Road and Back Woombye Road from Monday to Saturday 6.30am to 5.00pm for deliveries of material and equipment to site
- Old Palmwoods Road, Back Woombye Road and Jubilee Drive will be the primary haulage routes during the project, however some light vehicles may use alternative routes dependent on the origin of the supplier
- Workers may arrive on-site between 5.30am and 6.30am to prepare for the day's activities
- Installation of security lighting onsite that will be screened from residential areas
- Establishment of storage and lay down areas for construction materials.

The Project Team will endeavor to minimise impacts to neighboring residents and businesses including noise and dust during the construction of the Woombye stabling facility. We appreciate your patience during the construction period and will continue to update you as work progresses.

Where can I find out more information?

If you have any questions or would like to register for more information, please contact the Project Team on **1800 783 334** (free call) or **stabling@qr.com.au**. Visit **www.queenslandrail.com.au/stabling** anytime for more information and updates.

Project information

The South East Queensland (SEQ) Stabling Program involves the design and construction of new or additional train stabling facilities in four locations: Robina, Banyo, Elimbah and Woombye.

The \$116 million project was announced in May 2015. The SEQ Stabling Program is part of the broader New Generation Rollingstock project that will see 75 new suburban six-car trains added to the South East Queensland City network, a 30 per cent increase of the current fleet.

CPB Contractors will design and construct the new stabling facilities to help house 75 new six-car trains which are scheduled to commence services in mid-2016