

# Toowoomba Range Slope Stabilisation

## Works notice



Queensland Rail is investing \$37 million to ensure the safety and reliability of its network across the Toowoomba Range. The Toowoomba Range Slope Stabilisation (TRSS) Project will improve the drainage and slope stability at two key sites on the Toowoomba Range.

The works will enable our system to cope with wet weather conditions more effectively and reduce the risk of unplanned closures, which impact freight and passenger rail services.

This project will help support the local economy and community through improved reliability for freight and passenger rail services. The slope stabilisation project will commence in September 2019 and be completed by late-2020. Works will be carried out primarily during normal working hours (Monday to Saturday 7am – 5pm).

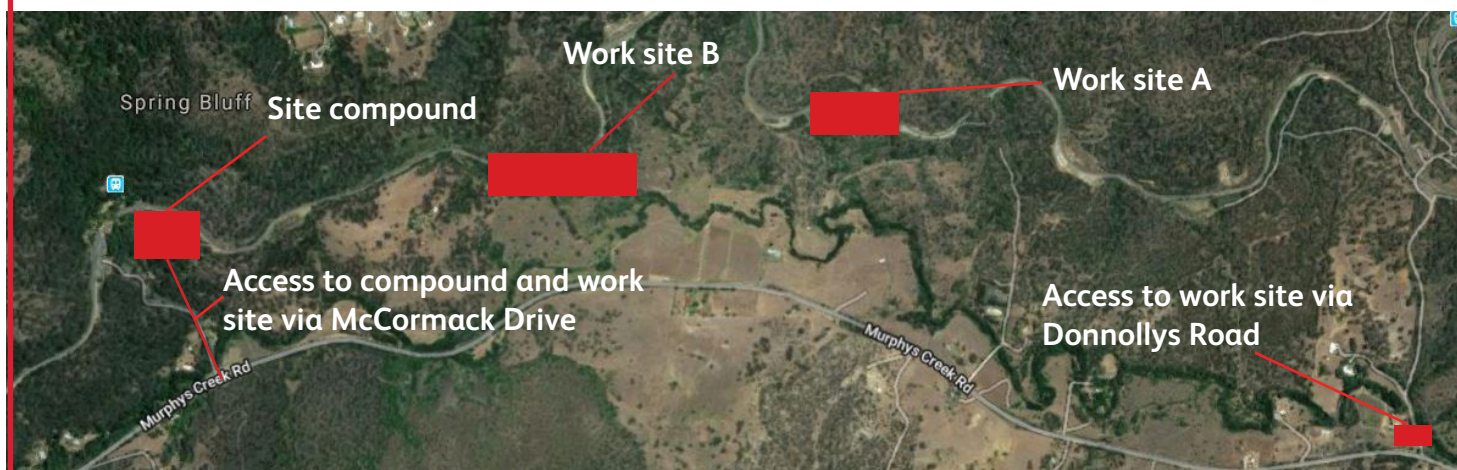
However, to safely complete the works while minimising impacts to freight and passenger services on the West Moreton Rail System, some of the works will take place during scheduled track closures on a 24-hour basis. This will include four-day shutdowns in September, October and November 2019 to install new culverts to improve drainage, with an additional two closures in 2020 (dates to be confirmed).

## What you need to know

Works will be carried out from **8.30am Saturday 7 September to 10pm Tuesday 10 September 2019** at work site A and B as shown on the map below. Deliveries to the site compound will commence from 1 September.

The works involve the excavation and rebuilding of the embankments and will include the use of heavy equipment, increased noise, dust and light levels and construction traffic, including reversing beepers.

There will also be increased truck movements as rock fill material is delivered to the site. Vehicles will be accessing the work sites via Murphy's Creek Road, Donnollys Road and McCormack Drive. Water tanks will be used as necessary to minimise excess dust.



## Construction impacts

Queensland Rail is aware that noise and lighting from such operations can cause temporary disturbance for our valued neighbours. Every effort will be made to carry out these works with minimal disruption and we apologise for any inconvenience.

## Keeping you informed

Queensland Rail is committed to keeping stakeholders and the community informed about the Toowoomba Range Slope Stabilisation project. For more information, please phone **13 16 17** (between 8am and 5pm, Monday to Friday) or email [communityengagement@qr.com.au](mailto:communityengagement@qr.com.au).