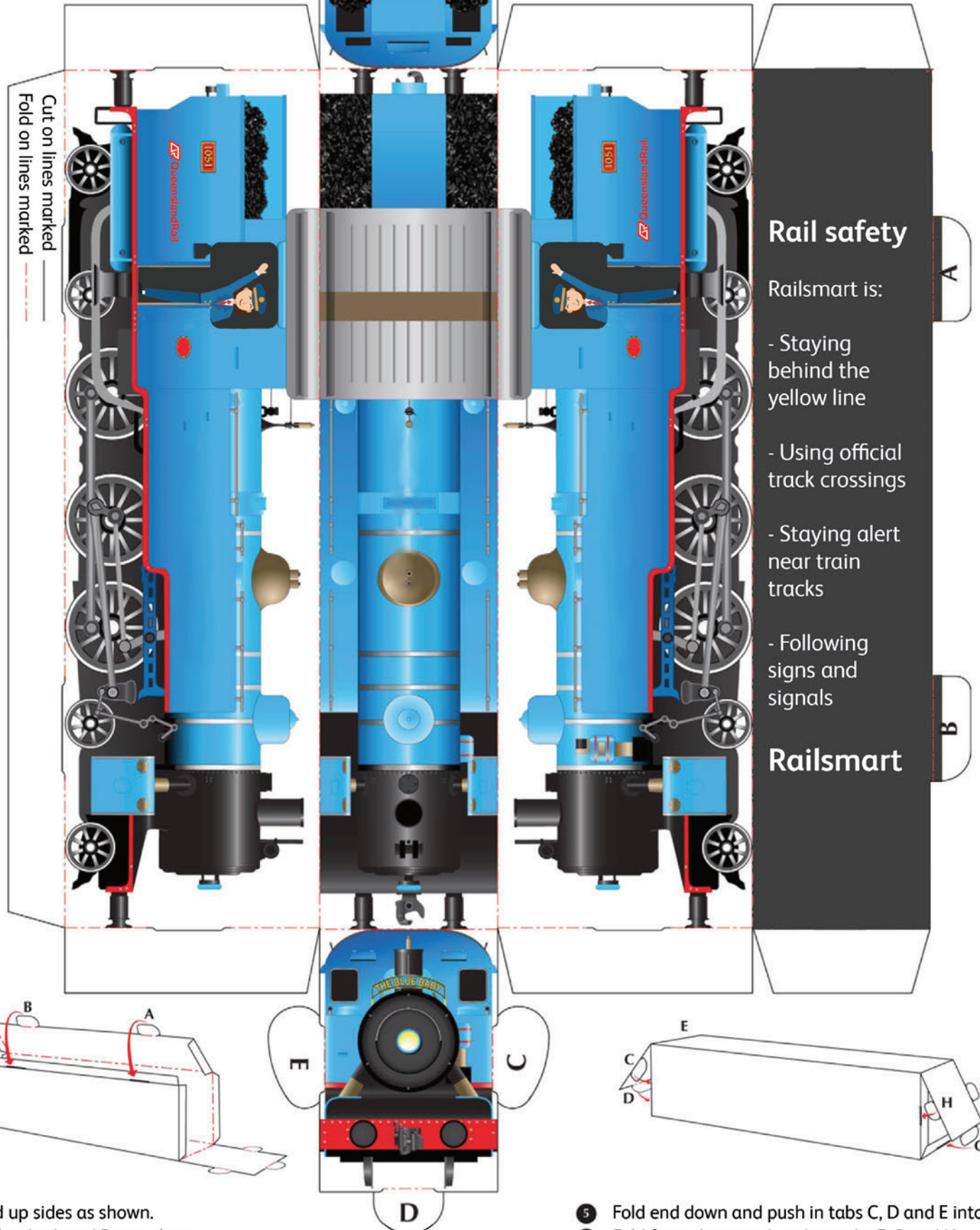
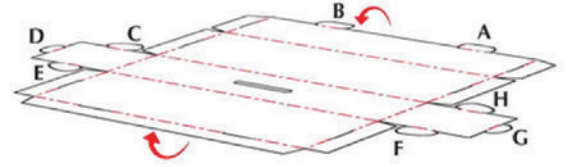


How to construct your locomotive

- 1 Lay train face down on a flat surface.
- 2 Pre-crease on all tabs and fold lines.



Rail smart

Railsmart is:

- Staying behind the yellow line
- Using official track crossings
- Staying alert near train tracks
- Following signs and signals

Railsmart

- 3 Fold up sides as shown.
- 4 Lock tabs A and B into slots

- 5 Fold end down and push in tabs C, D and E into slots.
- 6 Fold front down and push in tabs F, G and H.