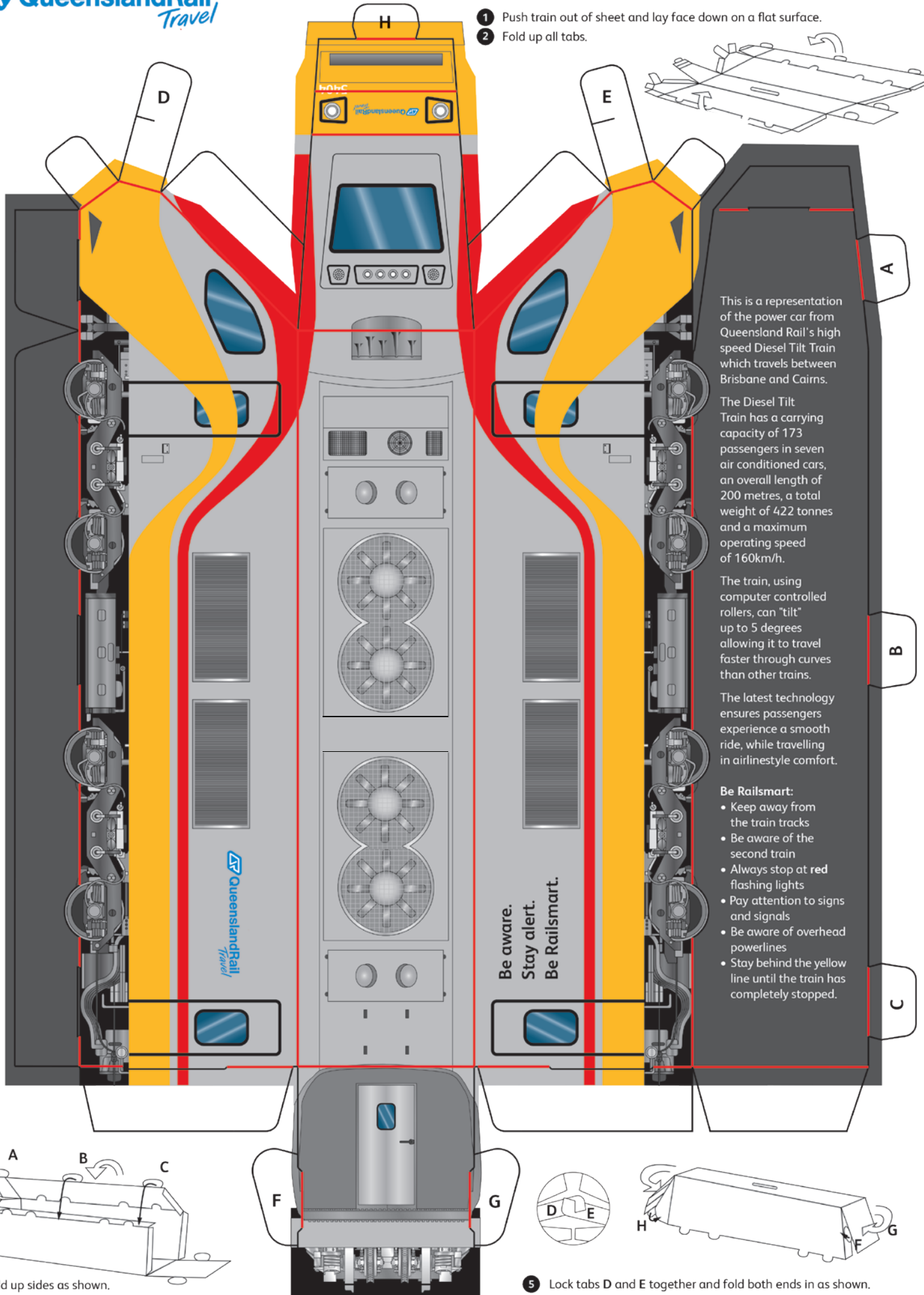
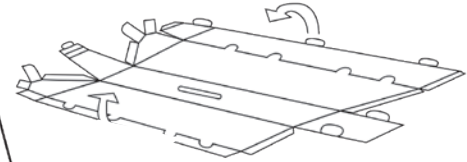


How to construct your locomotive.

- 1 Push train out of sheet and lay face down on a flat surface.
- 2 Fold up all tabs.



This is a representation of the power car from Queensland Rail's high speed Diesel Tilt Train which travels between Brisbane and Cairns.

The Diesel Tilt Train has a carrying capacity of 173 passengers in seven air conditioned cars, an overall length of 200 metres, a total weight of 422 tonnes and a maximum operating speed of 160km/h.

The train, using computer controlled rollers, can "tilt" up to 5 degrees allowing it to travel faster through curves than other trains.

The latest technology ensures passengers experience a smooth ride, while travelling in airlinestyle comfort.

- Be Railsmart:**
- Keep away from the train tracks
 - Be aware of the second train
 - Always stop at red flashing lights
 - Pay attention to signs and signals
 - Be aware of overhead powerlines
 - Stay behind the yellow line until the train has completely stopped.

**Be aware.
Stay alert.
Be Railsmart.**

- 3 Fold up sides as shown.
- 4 Lock tabs A, B and C into pre cut slots.

- 5 Lock tabs D and E together and fold both ends in as shown.
- 6 Lock tabs F, G and H into pre cut slots to complete your train.