

Cannon Hill station accessibility upgrade

The Cannon Hill station accessibility upgrade is part of the State Government's \$357 million investment to upgrade stations across the South East Queensland network, making them accessible for all customers.

Improvements to the station will include:

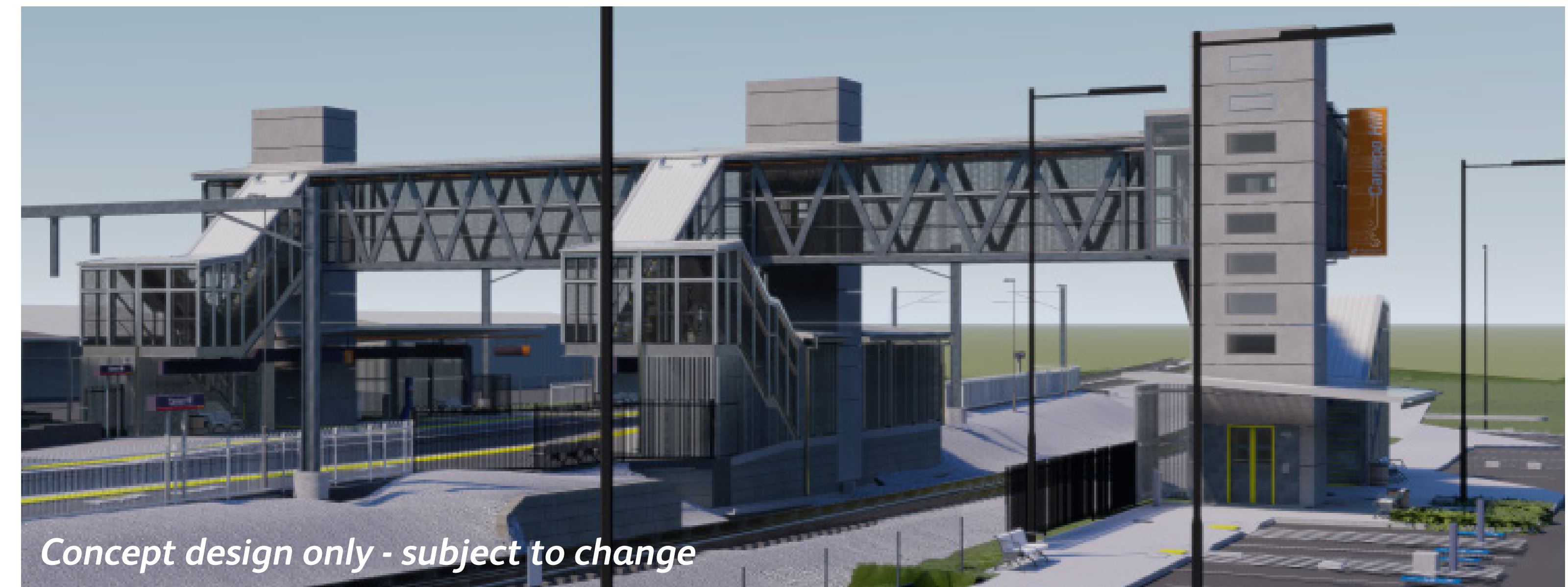
- a new footbridge with lift access
- raised platforms at assisted boarding points
- upgraded hearing augmentation loops and tactile surfaces
- improved security through enhanced CCTV and lighting upgrades
- new wayfinding and platform signage
- a new bicycle enclosure to support active transport and ensure bicycle safety at all times.

Main construction is expected to start in August 2020, with the station remaining operational during this period. Please take care around the work zones.

Thank you for your cooperation as we build you a better Cannon Hill station.

For more information or to provide feedback, please contact **1800 722 203** (free call) or email stationsupgrade@qr.com.au

Sign up for project updates at:
queenslandrail.com.au/EmailNotification



Delivery of the new station accessibility upgrades for the Queensland Rail network will mean about 84% of customers will travel to or from an accessible station.