

TABLE "1"
MINIMUM HORIZONTAL CLEARANCES TO A STRUCTURE.
 (MEASURE FROM TRACK CENTRE LINE TO NEAREST POINT OF STRUCTURE)

DIMENSION 'H'	STRUCTURE CATEGORY AND DESCRIPTION
3500	TO ALL STRUCTURES < 40m LONG ALONG TRACK.
4500	TO ALL STRUCTURES > 40m LONG ALONG TRACK. MID-SECTION FOOTBRIDGES (REFER TO CIVIL-SR-006).
3750	FOOTBRIDGES ON STATION PLATFORMS. (REFER TO CIVIL-SR-006).
3000	ELECTRIFICATION SUPPORT MASTS. HANDRAILS ON A RAIL BRIDGE OR SIMILAR.
3000**	BUILDINGS OVER A SIDING. TUNNEL WHICH INCLUDES A WALKWAY (ALLOWS A 1200mm WIDE WALKWAY 1800mm FROM TRACK CENTRE LINE).
2650**	SUPPORTS FOR LOADING FACILITIES, GANTRY CRANES ETC OVER DEDICATED SIDINGS WHERE TRACK IS FIXED TO A CONCRETE SLAB OR TO SPILLAGE PIT GIRDERS AND NO PEDESTRIAN ACCESS. TUNNEL OR BRIDGE SUPERSTRUCTURE WHERE REFUGES OR ESCAPEES ARE PROVIDED OR WHERE A WALKWAY IS PROVIDED ON THE OTHER SIDE OF THE TRACK.
2300**	STATION PLATFORM AWNING A MINIMUM OF 3300mm ABOVE RAIL LEVEL. (ZONE 'B') SIGNAL POST OR CAGE, POLES AND SIGNS, (RAILWAY INFRASTRUCTURE ONLY) (ZONE 'B' & 'C') - ENSURE AWNING DOES NOT OBSTRUCT SIGNALS.
2150**	FOR TEMPORARY CONSTRUCTION HOARDING OR STRUCTURE.
1800**	DEMARICATION FENCE OR SECONDARY HANDRAIL (810mm MAXIMUM HEIGHT ABOVE LOW LEG RAIL LEVEL).
1550**	HIGH LEVEL STATION / CREW CHANGE PLATFORMS (1050mm HIGH ABOVE LOW LEG RAIL LEVEL)
1370**	LOW LEVEL STATION / CREW CHANGE PLATFORMS OR LOADING BANK IN ACCORDANCE WITH THE RELEVANT STANDARD DRAWINGS (810mm HEIGHT ABOVE RAIL LEVEL)

ADDITIONAL HORIZONTAL CLEARANCE REQUIREMENTS NOTES

- (1) 4000mm FOR MAINTENANCE ACCESS ROADS - SITE SPECIFIC.
- (2) DRAIN WIDTH TO BE ADDED TO CLEARANCES - SITE SPECIFIC.
- (3) TUNNELS FOR FREIGHT LINES CARRYING "DANGEROUS GOODS" - SITE SPECIFIC DESIGN REQUIRED.
- (4)** DIMENSION TO BE INCREASED TO ALLOW FOR WORST CASE CURVE/CANT EFFECTS OF THE REFERENCE DESIGN VEHICLE.

TABLE "2"
MINIMUM VERTICAL CLEARANCES TO A STRUCTURE.
 (MEASURE FROM TRACK CENTRE LINE TO NEAREST POINT OF STRUCTURE)

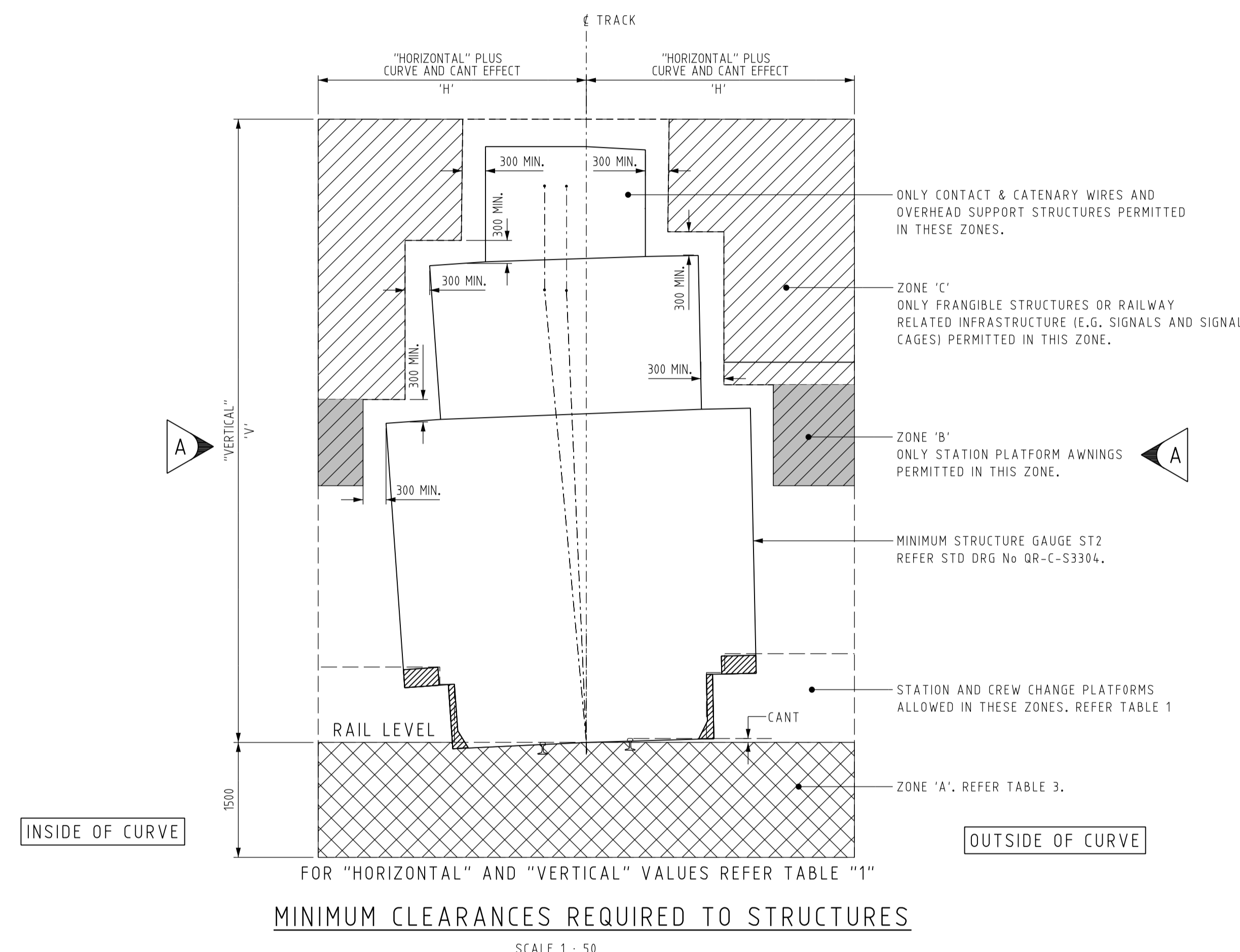
DIMENSION 'V'	
9000	ALL STRUCTURES >40m WIDE CROSSING THE TRACK, EXCEPT TUNNELS.
7900	ALL STRUCTURES <40m WIDE CROSSING THE TRACK ALLOWS CONSTRUCTION DIRECTLY ABOVE EXISTING OVERHEAD EQUIPMENT. DEPENDENT ON ACTUAL OVERHEAD EQUIPMENT CONFIGURATION. (E.g. MASTS, TRANSFORMERS EQUIPMENT).
6400	STATION FOOTBRIDGES IN BRISBANE SUBURBAN AREA, - GREATER CLEARANCE MAY BE REQUIRED - WITH A MINIMUM 500mm CLEARANCE FROM CATENARY WIRE AND 200mm FROM THE RETURN CONDUCTOR.
5300	TUNNEL WHERE TRACK IS FIXED TO A CONCRETE SLAB. ALLOWS 4700mm CONTACT WIRE HEIGHT, 100mm DEPTH OF OVERHEAD CONSTRUCTION AND 500mm STATIC ELECTRICAL CLEARANCE.

ADDITIONAL VERTICAL CLEARANCE REQUIREMENTS NOTES

- (1) CLEARANCE MAY BE REDUCED BY 300mm FOR TRACKS ON FULL DEPTH (250mm) CONCRETE SLEEPERS OR SLAB TRACK
- (2) TUNNELS FOR FREIGHT LINES CARRYING "DANGEROUS GOODS" - SITE SPECIFIC DESIGN REQUIRED.

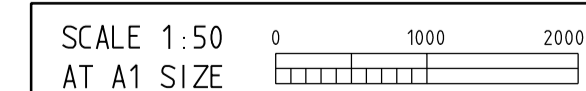
TABLE "3" ITEMS ALLOWED IN ZONE 'A' 1500 mm BELOW RAIL LEVEL

- TRACK STRUCTURE.
- FORMATION.
- PLATFORM FOOTINGS.
- LEVEL CROSSING PAVEMENT OR STRUCTURE.
- RAIL BRIDGE OR DRAINAGE STRUCTURE.
- SERVICES INSTALLED IN ACCORDANCE WITH CIVIL ENGINEERING TECHNICAL REQUIREMENTS CE-SR16 OR CE-SR17.
- OTHER STRUCTURES AS APPROVED BY THE DISCIPLINE HEAD TRACK AND STRUCTURES.



GENERAL NOTES

1. STRUCTURES OVER MULTIPLE TRACKS ARE TO CLEAR SPAN ALL TRACKS WITH NO SUPPORTING COLUMNS OR PIERS BETWEEN TRACKS.
2. FOR TRACK CENTRE SPACING REQUIREMENTS REFER TO DRAWING QR-C-S3307
3. CLEARANCES SHALL BE INCREASED WHERE DIRECTED BY QUEENSLAND RAIL TO ALLOW FOR:
 - SERVICES;
 - MAINTENANCE ACCESS;
 - OPERATIONAL REQUIREMENTS;
 - SIGHT LINES TO SIGNALS;
 - AVOIDANCE OF SERVICE DISRUPTION OR SPEED RESTRICTION DURING CONSTRUCTION
4. VERTICAL CLEARANCE SHALL BE INCREASED AS NECESSARY ABOVE OVERHEAD MASTS AND SUPPORTING EQUIPMENT. ELECTRICAL CLEARANCE (500mm MINIMUM) SHALL BE PRESERVED TO ALL LIVE PARTS OF THE SUPPORTING EQUIPMENT IN ACCORDANCE WITH MD-10-191.
5. CLEARANCES APPLY TO NARROW GAUGE TRACKS ONLY.



FILE No	ALTERATIONS			
	ISSUE	DESCRIPTION	NAME	RPEQ DATE
17/21855	A	UPDATE SIGNAL CLEARANCE TO ZONE 'B'	D. GIBB	13/06/18

1. THE PURPOSE OF THIS DRAWING IS TO PROVIDE TYPICAL STANDARD DETAILS. THE SUITABILITY OF THIS DRAWING SHALL BE DETERMINED AND CERTIFIED BY A RPEQ ENGINEER FOR THE SPECIFIC PROJECT.

DESIGNED	SUPERCEDES	APPROVED
DES CHK	STD DRG. Nos.	B. GILL
DRAWN	2461 & 2754.	19/05/18
DRG CHK	G. DUTTON	DATE
	APR. '18	
	B. GILL	W. BOLTON
	APR. '18	20/06/18
		DATE

QueenslandRail
 ACN 132 181 090

COPYRIGHT PROTECTS THIS PUBLICATION EXCEPT FOR PURPOSES PERMITTED BY THE COPYRIGHT ACT. REPRODUCTION BY WHATEVER MEANS IS PROHIBITED WITHOUT THE PRIOR WRITTEN PERMISSION OF Queensland Rail Limited. ENQUIRIES SHOULD BE ADDRESSED TO MANAGER TRACK & CIVIL DESIGN, Queensland Rail, GPO BOX 1429, BRISBANE 4001.

Network - Civil Engineering
STANDARD - STRUCTURE GAUGES
STRUCTURE CLEARANCE
 ELECTRIFIED LINES
 CLEARANCES REQUIRED TO NEW STRUCTURES

DRAWING NUMBER	ISSUE
QR-C-S3306	A